

## **ISLAND POINT LODGE ORIENTATION PACKAGE**

This orientation package will help answer to your questions and it will familiarize you with the lodge, its operations, what you would expect of us and what we would expect of you. Please read the information and upon your arrival at the lodge there will be a brief orientation meeting to clarify what is contained in this package as well as answering any questions you may have. After a brief orientation you will be able to gear up and do some fishing.

### **MEALS**

Breakfast is served from 5:00 am to 7:00 am. Appetizers are served at 6:30 pm, Dinner will be served at 7:00pm. The Lodge will supply bread, sandwich meats, cheese, and fish spreads for you to make your lunch. There is always a soup of the day and hotdogs available. Cookies, cakes, pies, or other types of pastries are also available for your enjoyment. Ice is available in the main lodge.

We will do our best to accommodate allergies and special diets. Please notify the cook.

We supply thermos bottles to take out with you on the boats. We serve bulk drinks such as Tang and lemonade. Soft drinks and water can be purchased at the lodge. Beer, wine, and assorted liquor are also available for purchase. Please note that Alaska has an open container law and drinking alcohol while driving a boat is prohibited.

### **BATHROOMS AND SHOWERS**

Each cabin has private bathroom facilities. Rooms located in the lodge are assigned bathrooms also located in the lodge. The water for showers is supplied by rain and brook water. Be mindful, we are on an island. There are no septic pumping services here. We need to take care of our tanks carefully.

**LAUNDRY** – There are coin operated washers and dryers located at the lodge. If you need change, check with the kitchen staff.

## MISCELLANEOUS

Power is supplied by diesel generators 24 hours a day.

We do our best to recycle. We separate cans, glass, paper/plastic. We appreciate your help in this process. Please do not put food in trash containers. Food left in the trash outside can attract bears.

Please do not smoke in the main lodge or the cabins. Use decks for smoking.

The cabins have propane heaters, please turn the switch on the unit to **PILOT** when you are gone for the day. It only takes a few minutes to warm up the cabin when you return. **DO NOT DRY ANYTHING** on the heaters. It can cause a fire and it can burn anything that you put on it. **YOU ARE RESPONSIBLE FOR ANY DAMAGE CAUSED BY SUCH A FIRE.**

## BOATS AND FISHING GEAR

An 18-foot skiff is included with your reservation. You may upgrade to a covered boat at an additional cost. The skiff or covered boat must be secured with a credit card number. There will be a boat inspection at the time of assignment and again when you complete your trip. If there is no damage the credit card number will be destroyed.

Emergency equipment, such as flares, signaling devices, first aid kit, life jackets, floating cushions and other items required by the US Coast Guard are in the boat.

Operate your boat carefully. The operator and the people aboard should always be watching for floating debris, which can damage the boat, motor, and affect your safety. Overheating is normally a result of seaweed caught in the water cooler intake hole of the motor. Always avoid large areas of seaweed. The operator and someone aboard should occasionally check the water discharge (pisser) from the motor. Make sure that there is a water discharge stream coming from the motor. A whistling or buzzing noise is normally an indication of the engine overheating. Shut down the motor and pull it up to see if seaweed is caught on the motor. Remove the seaweed and let it cool off a few minutes. Restart the motor and put it in hard reverse for a few seconds to clean out any seaweed caught in the motor. Put the motor in forward, if the whistling has stopped, then you can resume your trip. If the

whistling continues, let the engine rest for several minutes and repeat this process. If after the second attempt and there is still a problem, please call the lodge.

NEVER continue operating the boat when this alarm (whistling) is sounding. You will cause damage to the motor. You will be responsible for the damage to the engine.

Be mindful of shallow areas. Trim up the engine and proceed slowly. You do not want to hit any rocks or the ground. This could cause damage to your prop and / or motor.

You will arrive at Papkies Landing. This is where you will cross the Wrangle Narrows to get to the lodge. You should start taking mental notes of location, direction, and condition of the tides. The lodge, with a red roof, is located diagonally to the left across the Narrows and it can be seen from Papkies. It is approximately a 5-minute ride to the lodge. As you approach the lodge the boat will be leaving the main channel of water and enter a smaller channel of water. To the left you will notice two small islands with channel markers. Never take a boat in or out to the main channel between these channel markers. They are connected by a strip of ledge, and it will be very noticeable at lower tides. Going between the two islands could cause damage to the engine. Go to the outer side of these marker to get to the main channel. We will review all of this again at the lodge during a brief orientation. We are trying to make you aware of where you are and what you are doing. Your safety and making your trip an enjoyable fishing vacation is our goal.

Operating a boat is like operating an automobile on a two-lane road. Stay to the right. Do not go on the outside of the channel markers. They are there for a reason. There may be ledge right behind them, which can cause damage to the boat and engine. Concrete markers are set on ledge, do not get too close to them. Use common sense when you are operating a boat. Large boats in the channel have the right of way. When trying to cross the wake of another boat, slow down, try to cross the wake perpendicularly. HOT RODDING can cause injuries. A vacation with injuries is no fun.

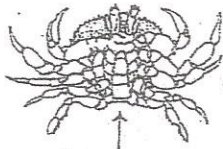
Halibut and Salmon fishing gear will be assigned to you, including extra weights, hooks, and spreader bars. The extra hooks must be kept in the package and kept dry. You will be charged for any lost gear and used hooks.

You can obtain the fishing equipment and bait from the staff at the fishing cleaning station.

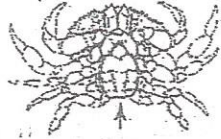
Each boat can be assigned a crab pot for the week. You will be responsible for bringing it back at the end of the week. When putting the crab pot out, you will need your name and address marked on a piece of duct tape and it must be attached to the buoy.

You are allowed 3 crabs per day per person, under the Alaskan Fishing License Regulations. We will clean and prepare your crab for you to eat that day or blanch them to kill bacteria so they can be frozen and taken home with you. To cook at home, place the crab in boiling water for about 7 to 10 minutes.

#### DUNGENESS CRAB



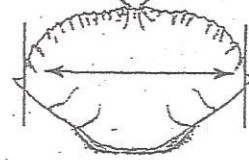
male—narrow abdominal flap



female—wide abdominal flap covers most of underside

**NO HARVEST ALLOWED**

(minimum size 6 1/2")



Width measurement of Dungeness crab shall be the straight-line distance across the carapace and shall not include the spines.

Fish nets are for salmon, not for netting halibut. For halibut fishing use the assigned harpoon.

Bait – Please take care of it. Sometimes it is hard to come by. When halibut fishing use only a half a herring. Halibut will attempt to eat anything large or small. If you plan on going fishing before breakfast, please ask for bait the evening before and put it in a cooler for the morning use.

Please do not put fish on the dock. The slime will make the dock slippery. Use the fish wheelbarrow to take them to the fish cleaning and weight stations.

Keep your boats clean. Wash out the fish blood. Do not throw any trash in the water. Leave it in the boat until you get back to the lodge. Place the trash in the appropriate containers on the deck.

## **FISH CLEANING AND PREPARATION**

We will clean and fillet all your fish. Please tell one of the dock workers how you would like them prepared. The fish station will close at 10pm or at dusk. Whichever comes first.

You will be assigned a number according to the cabin or room you are in. This number will be put on all your fish packages. If you are in a group and you intend to pool and divide your fish at home, use one of your group's numbers. This will make it easy when we store fish in the walk-in freezer. Once a number is put on your fish you cannot change or sort them. Your fish will be packed into 50-pound boxes in preparation for your trip home. There will be a charge of \$25.00 for the box.

## **LODGE MISCELLANEOUS INFORMATION**

Please review the fishing regulations. Please be aware of fishing limits. There will be several copies at the lodge for your use. You must carry your fishing license with you when fishing.

The lodge has a fishing derby. You can win a free week of fishing if you catch the largest fish in any of the following categories, King Salmon, Sockeye Salmon, Coho Salmon, and Halibut. Check the derby chart on the wall in the eating area.

While fishing in some of the rivers you may see black bears. They will normally not cause you any problems. However, the best policy is to make them aware that you are there, never tease or disturb the bears, leave them alone and do not get between a cub and its mother. We have never had a problem with them. Use common sense when encountering a bear. You will most likely not have a problem. If you intend to fish some of the rivers and feel that you would like a little assurance, you can purchase a can of bear pepper spray in town or from any sporting store or sporting catalog.

Halibut is available almost anywhere in salt water. Halibut has been caught in the Narrows, some over 400 lbs. Trolling for Kings has produced

Halibut and vice versa. The best areas for Halibut are in the larger bodies of water. We fish for halibut in depths 25 to 90 feet. Sometimes deeper. It's your choice what depths you would like to fish. We provide maps which indicate good spots. Depending upon weather conditions, we will give you options for fishing.

Raffle tickets for the next fishing season are also available at the lodge. The cost is \$10.00 per ticket. One name is drawn for every 50 tickets or less. For example, if 190 tickets were sold, we would draw 4 winning names.

**GRATUITIES** - Many times during the summer I am asked, "What should I leave for a tip." Here is what I tell the clients. Just as when you go to a restaurant, you tip for service. Here at Island Point Lodge the staff gives you a week of service, a great deal of attention at meals, and the kitchen staff works hard and tries to provide you with special meals and service. Other lodge staff employees will help you with your fish cleaning and processing, giving you advice on fishing, and picking up things in town for you, etc.

A \$400.00 tip from each guest is approximately a 15% tip. Please consider the service you have gotten. Again, tipping is arbitrary, just as in the restaurants. It is best for you to tip each of the lodge staff individually, based on what you feel they deserve. We have provided envelopes with the staff names in each cabin and the main lodge for your use. The staff will appreciate your tips.

## **U.S. FOREST SERVICE**

Island Point Lodge, Inc. is operating in the Tongass National Forest under the USDFS permit #2720. It is important that all visitors be aware that they are visiting their National Forest and informed that permit holders are legally authorized to conduct their business in the National Forest.

As we have stated elsewhere, please do not litter, the National Forests are your forests, your taxes at work providing you the opportunity to enjoy the outdoors and hopefully enjoying an Alaskan experience.

I hope that this orientation package has answered some of your questions and that it has given you an insight of what is expected of you and what you can expect once you are at the lodge. As I have stated previously, upon your

arrival at the lodge, you will be given a brief orientation. We will clarify any questions that you may have and most likely cover some new items that I have failed to cover in this orientation package.

This is your fishing vacation, and we want to make it a safe and enjoyable ALASKA FISHING EXPERIENCE for you as well as for those who are with you and our other guests.

If you have any questions after reading this package, please feel free to call our office so that we may help you.

Thank You.....Good fishing....

THE ISLAND POINT LODGE CREW